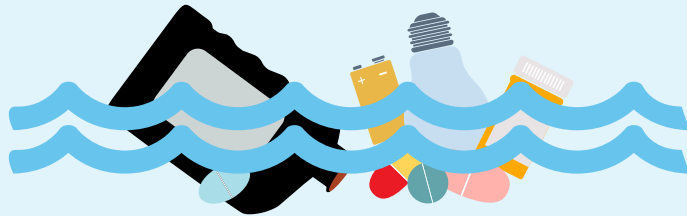


KEEP YOUR JUNK OUT OF OUR WATER



DON'T THROW THAT IN THE GARBAGE!

Household chemicals...

Take motor oil, paint, pesticides and other household hazardous waste to your county drop-off site or a licensed local business.

In Washington County:

www.co.washington.mn.us/604/Environmental-Center

Old and unused medications...

Drop off old and unused medicines at a drug take-back event or collection site.

Find an unwanted medications disposal site:

www.co.washington.mn.us/3029/Medication-Drop-Off



If there is no drug take-back program...

FDA U.S. FOOD & DRUG ADMINISTRATION

Follow these simple steps to dispose of medicines in the household trash*

MIX
Mix medicines (do not crush tablets or capsules) with an unpalatable substance such as dirt, kitty litter, or used coffee grounds;

PLACE
Place the mixture in a container such as a sealed plastic bag;

THROW
Throw the container in your household trash;

SCRATCH OUT
Scratch out all personal information on the prescription label of your empty pill bottle or empty medicine packaging to make it unreadable, then dispose of the container.

We need your help to keep our waters clean!

Learn more about Minnesota water at www.pca.state.mn.us/waste



IF IT'S WINDY... OR YOU'VE GOT BEARS

Keep your garbage cans inside until collection time.

PUT A LID ON IT!

Be sure to keep lids closed on dumpsters and garbage cans!
Also, don't fill dumpsters with liquid waste or try to hose them out.



USE YOUR UTILITY SINK, NOT YOUR LOCAL STORM DRAIN!

Dumping chemicals into a storm sewer or ditch is called an "illicit discharge" and is ILLEGAL.

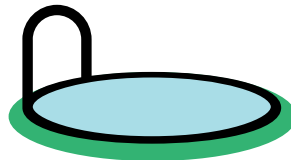
Take your car to the car wash or...

Or wash your car over the grass, not the street or your driveway, so that soapy water doesn't end up in our lakes and streams.



If you have a pool or hot tub...

Don't dump chlorinated water into the street or pond! Before you empty it in stop adding chlorine and leave the water uncovered for 3-5 days.



Use your utility sink!

Use your utility sink to wash off paint brushes and solvent soaked rags, to dump soapy water, and to empty swimming pools and spas.



If you see illegal dumping or see water that is cloudy, colored, or has an oil sheen, report it to your city public works department.

Thanks for doing your part to protect Minnesota water!

www.pca.state.mn.us/waste