

# Washington Conservation Center

## Stormwater Best Management Practices

455 Hayward Ave. N., Oakdale, MN | [www.mnwcd.org](http://www.mnwcd.org)

In partnership with:

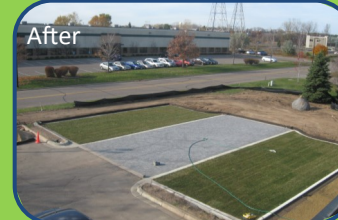


### Project Overview:

The Washington Conservation District received a cost-share grant from Ramsey Washington Metro Watershed District to install stormwater best management practices (BMPs) shortly after moving to its new office in 2013. The four BMPs installed between summer 2014 and spring 2015 include: permeable pavement parking lot, native prairie, native planting, and raingarden.

#### 1. Permeable Pavement Parking Lot

- Provides 10 parking spaces for overflow parking
- Irrigated and mowed like normal turf grass
- Pervious pavers in center
- Two types of plastic grids planted with turf grass
- System is 18 inches deep, with an underdrain



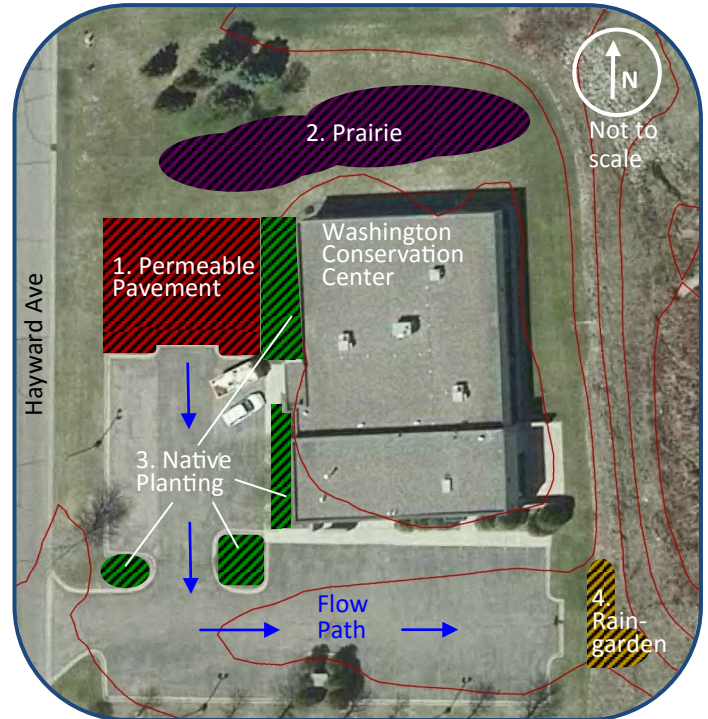
#### 2. Native Prairie

- Short dry grass mix and black-eyed susans were seeded
- Soil removed from permeable pavement project stayed onsite and was used in this location to form dynamic mounds



#### 3. Native Planting

- Planting beds around office contain mostly native plants
- Native plants include: little bluestem, prairie smoke, and prairie dropseed



#### 4. Raingarden (Biofiltration)

- Receives runoff from parking lot
- Pretreatment box removes debris
- Basin divided in half for comparison of soil mixes C and D (MN Stormwater Manual)
- WCD monitors underdrain outlet to study pollutant reduction by each soil type
- Drains in 48 hours
- Raingarden is approximately 1,200 sq. ft.

