

Native Plants Moist to Dry Soils - Shade



Columbine 

Aquilegia canadensis
 Ht: 36" Flower: Orange Bloom: May-June
 Habitat: Full sun to shade. Moist to dry soils.
 Woodland and Forest.



Harebells

Campanula rotundifolia
 Ht: 24" Flower: Purple Bloom: June-September
 Habitat: Full sun to part shade. Moist to dry soils.
 Savanna and Woodland.



Pennsylvania Sedge

Carex pennsylvanica
 Ht: 9" Flower: Brown Bloom: May
 Habitat: Full sun to full shade. Moist to dry soils.
 Woodland and Forest.



 **Wild Geranium**

Geranium maculatum
 Ht: 18" Flower: Purple Bloom: May-June
 Habitat: Full to part shade. Moist to dry soils.
 Woodland and Forest.



Bloodroot 

Sanguinaria canadensis
 Ht: 12" Flower: White Bloom: May
 Habitat: Part sun to full shade. Moist to dry soils.
 Woodland and Forest.



Bottlebrush Grass

Elymus hystrix
 Ht: 48" Flower: Green Bloom: June-July
 Habitat: Full sun to full shade. Wet to dry soils.
 Woodland and Lake Edge.



Jacob's Ladder

Polemonium reptans
 Ht: 18" Flower: Blue Bloom: May-June
 Habitat: Part sun to full shade. Moist to dry soils.
 Woodland and Forest.



Wild Ginger

Asarum canadense
 Ht: 12" Flower: Maroon Bloom: May-June
 Habitat: Part sun to full shade. Moist to dry soils.
 Forest.



Tall Meadow Rue 

Thalictrum dasycarpum
 Ht: 48" Flower: White Bloom: June-July
 Habitat: Full sun to part shade. Moist to dry soils.
 Woodland and Lake Edge.



Rue Anemone

Anemone thalictroides
 Ht: 18" Flower: Purple Bloom: May-June
 Habitat: Part sun to shade. Moist to dry soils.
 Woodland and Forest.

Native Plants Moist to Dry Soils - Sun



Narrow-Leaf Coneflower

Echinacea angustifolia

Ht: 24" Flower: Purple Bloom: July-August

Habitat: Full to part sun. Moist to dry soils.

Prairie and Savanna.

Little Bluestem

Schizachyrium scoparium

Ht: 36" Flower: Amber Bloom: July-September

Habitat: Full sun to part shade. Moist to dry soils.

Prairie and Savanna.



Butterflyweed

Asclepias tuberosa

Ht: 24" Flower: Orange Bloom: June-September

Habitat: Full to part sun. Moist to dry soils.

Prairie and Savanna.

Flat Topped Aster

Aster umbellatus

Ht: 36" Flower: White Bloom: July-August

Habitat: Full sun to full shade. Moist to wet soils.

Prairie and Lake Edge.



Northern Blazing Star

Liatris ligulistylis

Ht: 36" Flower: Purple Bloom: July-August

Habitat: Full to part sun. Wet to dry soils.

Prairie and Savanna.

Spiderwort

Tradescantia bracteata

Ht: 24" Flower: Purple Bloom: June-August

Habitat: Full to part sun. Moist to dry soils.

Prairie and Savanna.



Big Bluestem

Andropogon gerardii

Ht: 72" Flower: Purple Bloom: July-September

Habitat: Full sun to part shade. Moist to dry soils.

Prairie and Savanna.

Wild Onion

Allium cernuum

Ht: 18" Flower: Pink Bloom: July-September

Habitat: Full to part sun. Moist to dry soils.

Prairie and Savanna.



Prairie Coneflower

Ratibida pinnata

Ht: 48" Flower: Yellow Bloom: July-October

Habitat: Full to part sun. Moist to dry soils.

Prairie and Savanna.

Indiangrass

Sorghastrum nutans

Ht: 60" Flower: Amber Bloom: July-September

Habitat: Full sun to part shade. Moist to dry soils.

Prairie and Savanna.



Native Plants Wet Soils - Sun



Marsh Milkweed

Asclepias incarnata

Ht: 36" Flower: Purple Bloom: June-August

Habitat: Full sun to part shade. Wet to moist soils.

Wet Meadow and Lake Edge.

Fox Sedge

Carex vulpinoidea

Ht: 24" Flower: Green Bloom: May-June

Habitat: Full sun to part shade. Wet to moist soils.

Wet Meadow and Lake Edge.



Joe Pye

Eupatorium maculatum

Ht: 66" Flower: Purple Bloom: July-September

Habitat: Full sun to part shade. Wet to moist soils.

Wet Meadow and Wet Prairie.

Greenheaded Coneflower

Rudbeckia laciniata

Ht: 48" Flower: Yellow Bloom: July-September

Habitat: Full sun to part shade. Wet to moist soils.

Prairie and Lake Edge.



Soft Rush

Juncus effusus

Ht: 36" Flower: Brown Bloom: July-August

Habitat: Full sun to part shade. Wet to moist soils.

Wet Meadow and Lake Edge.

Virginia Mountain Mint

Pycnanthemum virginianum

Ht: 36" Flower: White Bloom: July-September

Habitat: Full sun to part shade. Wet to moist soils.

Wet Meadow and Prairie.



Prairie Cordgrass

Spartina pectinata

Ht: 72" Flower: Yellow Bloom: August-October

Habitat: Full to part sun. Wet to moist soils.

Wet Meadow and Lake Edge.

Bottle Gentian

Gentiana andrewsii

Ht: 24" Flower: Blue Bloom: August-October

Habitat: Full to part sun. Wet to moist soils.

Wet Meadow and Lake Edge.



Golden Alexanders

Zizia aurea

Ht: 36" Flower: Yellow Bloom: May-July

Habitat: Full sun to part shade. Wet to moist soils.

Wet Prairie and Savanna.

Boneset

Eupatorium perfoliatum

Ht: 36" Flower: White Bloom: June-August

Habitat: Full sun to part shade. Wet to moist soils.

Wet Meadow and Prairie.



Native Plants Wet Soils - Shade



Marsh Marigold

Caltha palustris

Ht: 18" Flower: Yellow Bloom: May-June

Habitat: Part sun to shade. Wet soils.

Wet Meadow.

Fringed Sedge

Carex crinita

Ht: 36" Flower: Green Bloom: May-June

Habitat: Full sun to part shade. Wet to moist soils.

Wet Meadow and Lake Edge.



Sensitive Fern

Onoclea sensibilis

Ht: 24"

Habitat: Part sun to full shade. Wet to moist soils.

Wet Meadow and Forest.

Cardinal Flower

Lobelia cardinalis

Ht: 36" Flower: Red Bloom: July-October

Habitat: Full sun to part shade. Wet to moist soils.

Wet Meadow and Lake Edge.



Blue Flag Iris

Iris versicolor

Ht: 36" Flower: Blue Bloom: June-July

Habitat: Full sun to part shade. Wet soils.

Wet Meadow and Lake Edge.

Long Beaked Sedge

Carex sprengelii

Ht: 18" Flower: Green Bloom: June-July

Habitat: Part sun to full shade. Wet to moist soils.

Woodland and Forest.



Blue Lobelia

Lobelia siphilitica

Ht: 30" Flower: Blue Bloom: July-October

Habitat: Full sun to part shade. Wet to moist soils.

Wet Meadow.

Jack-in-the-Pulpit

Arisaema triphyllum

Ht: 30" Flower: Green Bloom: May-June

Habitat: Part sun to shade. Wet to moist soils.

Wet Meadow and Forest.



Sweet Grass

Hierochloa odorata

Ht: 24" Flower: Green Bloom: May-June

Habitat: Full sun to part shade. Wet to moist soils.

Wet Meadow and Lake Edge.

Canada Anemone

Anemone canadensis

Ht: 24" Flower: White Bloom: May-June

Habitat: Full sun to part shade. Wet to moist soils.

Wet Meadow and Lake Edge.



Native Shrubs



Chokecherry

Prunus virginiana

Ht: 15-25' Flower: White Bloom: May-June

Habitat: Full sun to part shade. Dry to moist soils.

Purple-black fruit. Fall color: Yellow-orange

Wild Plum

Prunus americana

Ht: 10-20' Flower: White Bloom: May-June

Habitat: Full sun. Dry to moist soils.

Red-purple fruit. Fall color: Yellow



Fireberry Hawthorn

Crataegus chrysocarpa

Ht: 6-18' Flower: White Bloom: May

Habitat: Full sun. Dry to moist soils.

Red berries. Fall color: Brown

American Hazelnut

Corylus americana

Ht: 6-15' Flower: yellow Bloom: March-May

Habitat: Full sun to part shade. Dry to moist soils.

Edible nuts. Fall color: Yellow to red



Serviceberry

Amelanchier interior

Ht: 15-39' Flower: White Bloom: April-June

Habitat: Full sun to part shade. Dry to moist soils.

Red-purple berries. Fall color: Yellow to red

Pagoda Dogwood

Cornus alternifolia

Ht: 10-25' Flower: White Bloom: May-July

Habitat: Part shade to full shade. Dry to moist soils.

Blue-black berries. Fall color: Red



Red-osier Dogwood

Cornus sericea

Ht: 5-13' Flower: White Bloom: May-August

Habitat: Full sun. Wet to moist soils.

White berries, red branches. Fall color: Maroon

Nannyberry

Viburnum lentago

Ht: 12-25' Flower: White Bloom: May-June

Habitat: Full sun to part shade. Wet to moist soils.

Blue-black berries. Fall color: Maroon red



Highbush Blackberry

Rubus allegheniensis

Ht: 3-10' Flower: White Bloom: May-June

Habitat: Full sun to part shade. Dry to moist soils.

Black berries.

Red raspberry

Rubus idaeus

Ht: 3-5' Flower: White Bloom: May-June

Habitat: Full sun to part shade. Dry to moist soils.

Red berries



Native Trees



Bur Oak

Quercus macrocarpa

Ht: 60-110' Growth rate: Slow-Medium Fall color: Yellow

Excellent wildlife value. Very drought tolerant.

Habitat: Full sun. Dry to moist soils.

White Oak

Quercus alba

Ht: 60-95' Growth rate: Very Slow Fall color: Red

Excellent wildlife value. Very drought tolerant.

Habitat: Full sun. Dry to moist soils.



Black Cherry

Prunus serotina

Ht: 50-98' Growth rate: Medium Fall color: Yellow-orange

Excellent wildlife value.

Habitat: Full sun to part shade. Dry to moist soils.

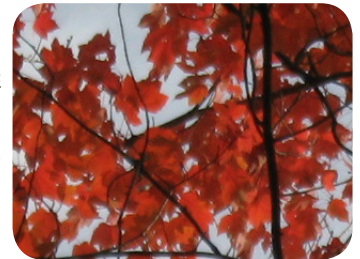
Red Maple

Acer rubrum

Ht: 50-95' Growth rate: Fast Fall color: Red

Excellent wildlife value. Drought and flood tolerant.

Habitat: Full sun to part shade. Wet to moist soils.



Sugar Maple

Acer saccharum

Ht: 60-108' Growth rate: Slow Fall color: Yellow-Red

Excellent wildlife value. Very sensitive to flooding.

Habitat: Full shade to part shade. Moist soils.

White Pine

Pinus strobus

Ht: 60-130' Growth rate: Fast

Excellent for birds. Native populations declining.

Habitat: Full sun to light shade. Dry to moist soils.



Hackberry

Celtis occidentalis

Ht: 50-105' Growth rate: Medium Fall color: Yellow

Purple berries valuable to wildlife.

Habitat: Full sun to part shade. Wet to moist soils.

Paper Birch

Betula papyrifera

Ht: 90' Growth rate: Fast Fall color: Yellow

Good wildlife value. Unique white bark.

Habitat: Full sun. Moist soils.



Tamarack

Larix laricina

Ht: 50-70' Growth rate: Medium-Fast Fall color: Yellow

Only conifer that sheds needles in the fall.

Habitat: Full sun. Swamps, peaty lakeshores and boggy streams.

BlueThumb.org

For how-to's, retailers, grants and more