



Gardening with Native Plants

Angie Hong, East Metro Water Education Program



Angie Hong is the coordinator for Minnesota's East Metro Water Resource Education Program (EMWREP), a local government partnership with 30 members in Ramsey, Washington, Chisago and Isanti Counties.

In her free time, she enjoys singing, gardening, and exploring the prairies, woods and waters of the St. Croix Valley.

Her book, “Exploring the St. Croix Valley: Adventures on and off the Water” will be out in July 2024.

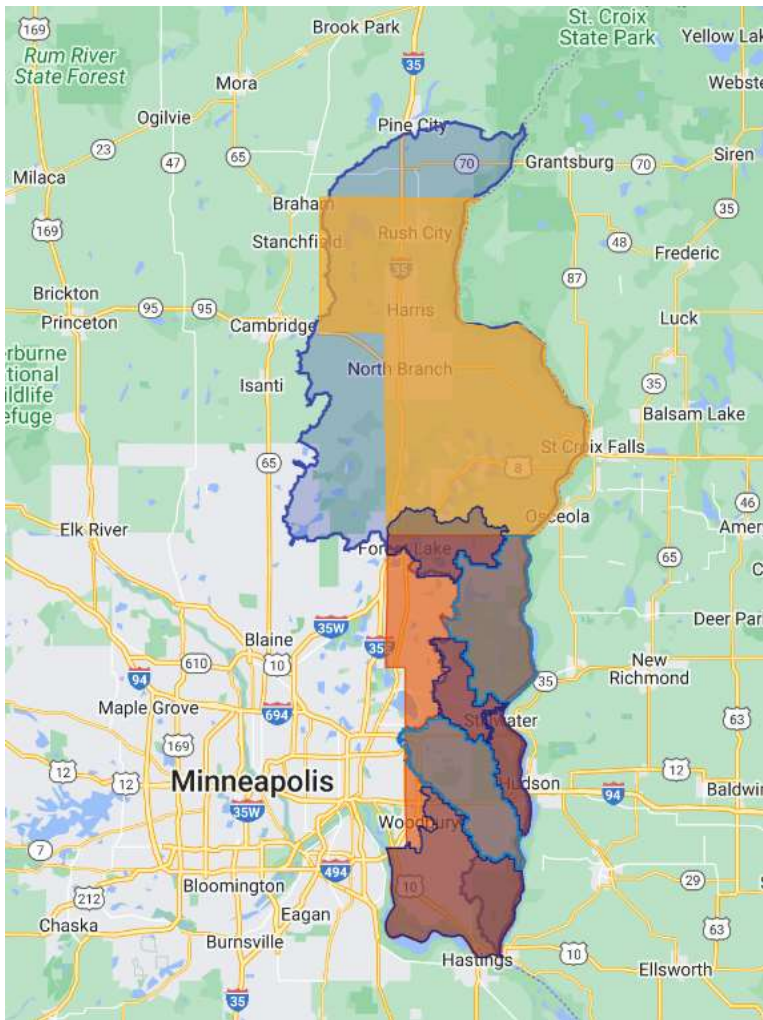
angie.hong@mnwcd.org

651-796-2210



@mnnature_awesomeess

Read the weekly blog articles! eastmetrowater.org



Lower St. Croix Watershed Partnership
www.lsc1w1p.org

East Metro Water Education Program
www.mnwcd.org/emwrep

Support for locally-led conservation:

Free Site Visits for landowners

Cost-share grants to help offset costs of conservation projects

Education: Workshops, volunteer events, project tours, and community programs throughout the year

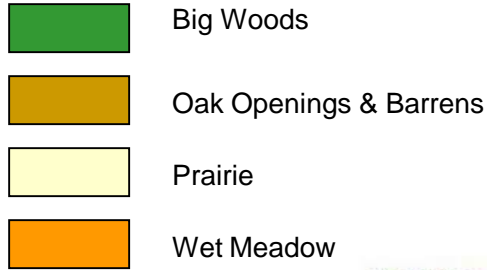
Topics of expertise: Lake, stream, river and wetland health, habitat restoration, invasive species management, conservation farming, sustainable yards and gardens

**75% of land in
Minnesota is
privately owned**

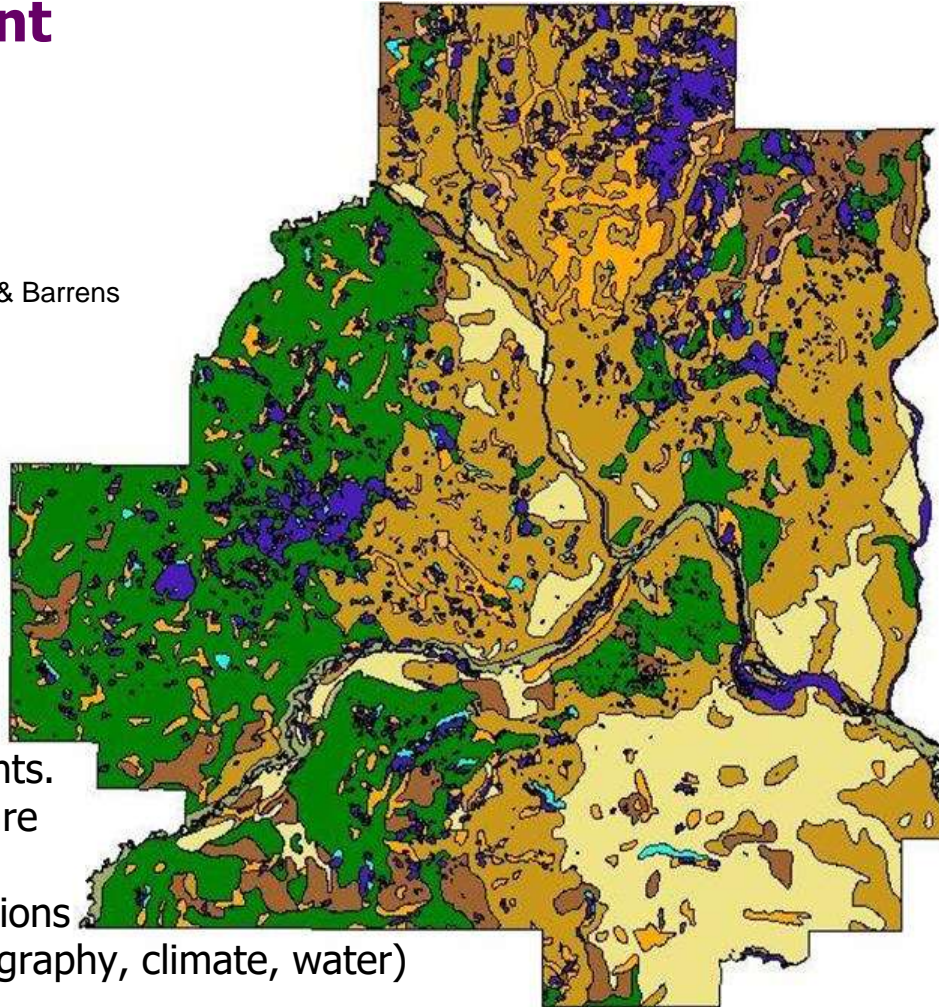
**You play a CRITICAL
role in helping to
rebuild habitat
corridors for wildlife
and clean water!**



Pre-settlement Native Plant Communities

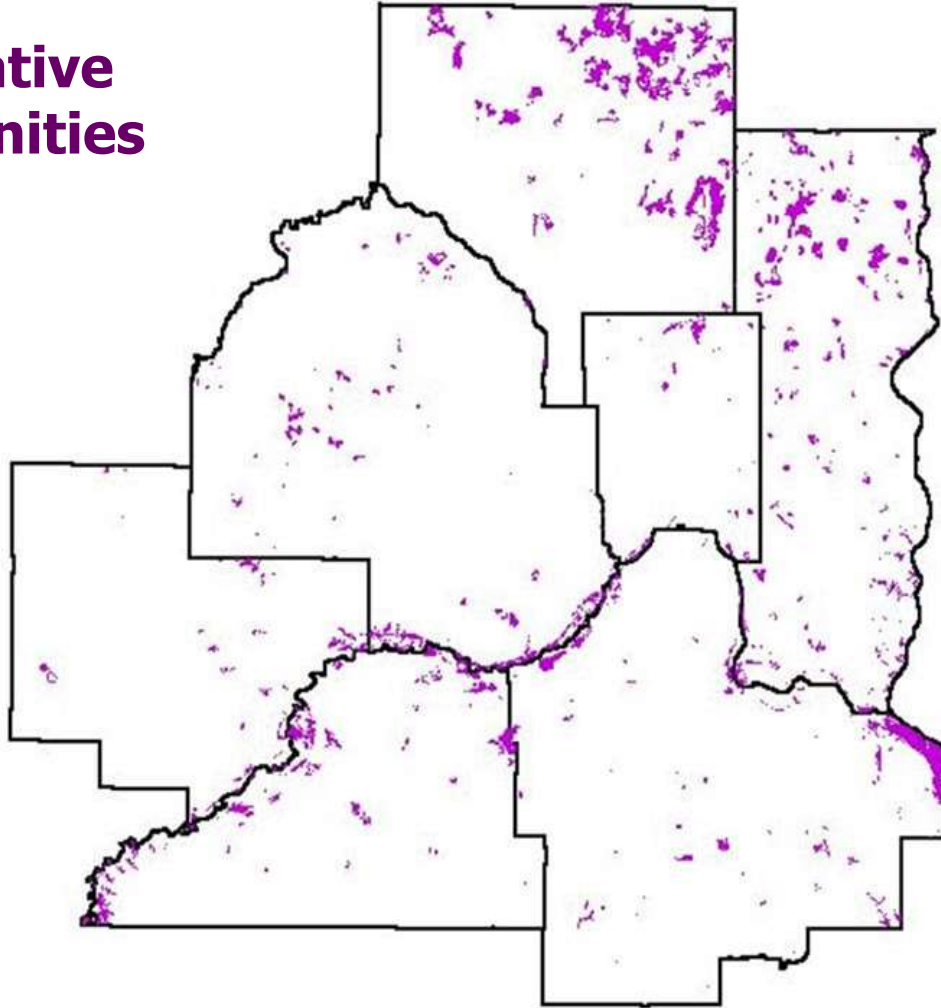


In nature, plants commonly grow in association with a particular group of other compatible plants. These communities are found where specific environmental conditions exist (e.g. soils, topography, climate, water)



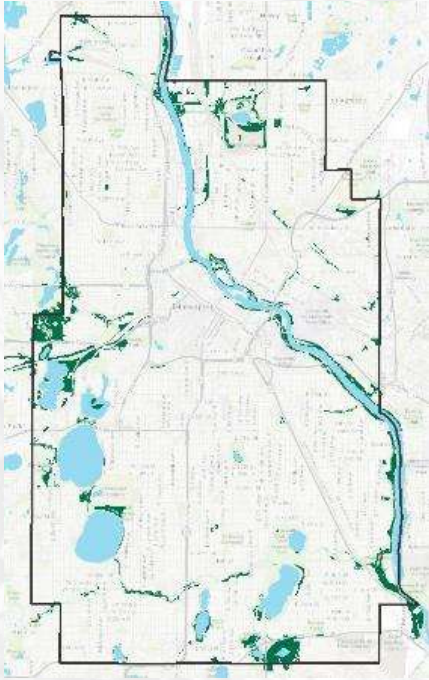
Remaining Native Plant Communities

Vegetation removal and soil disturbance (and soil compaction) reduces the amount of runoff absorbed, increasing sediment-laden runoff into lakes, streams & wetlands.

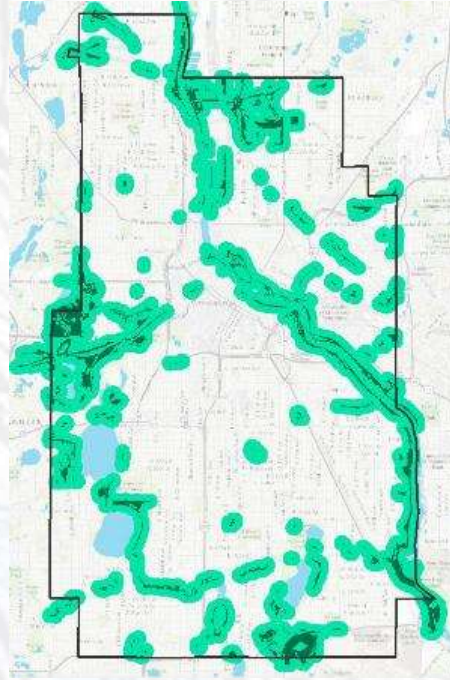


Re-building Pollinator Connections

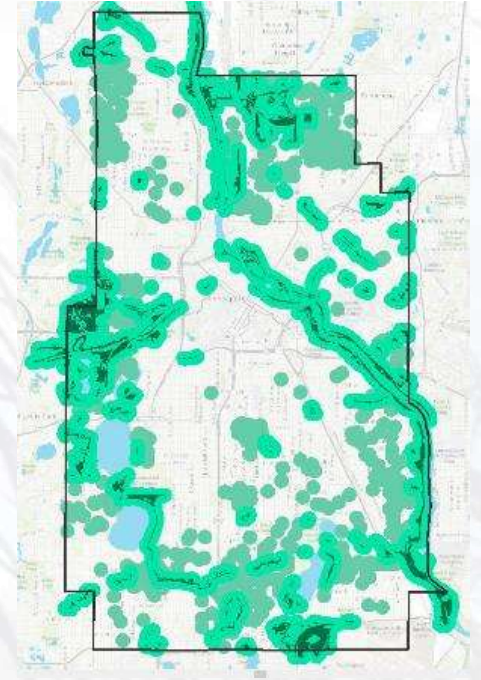
Pollinator Patches and Corridors in Minneapolis



**Existing Known High
Quality Habitat**



**+ 200 Meter Buffer
(the distance small pollinators can fly)**



**+ Metro Blooms and workshop
raingardens with Buffers**

What is
your vision
for your
yard?

1



2



3



4



Types of Native Planting Projects:

1. Trees and shrubs
2. Pocket plantings
3. Prairies and meadows
4. Bee-friendly lawns

1. Trees and shrubs



Hawthorn





268 species of birds in the St. Croix Valley
More than 300 species use the Mississippi River flyway
60 Species of Greatest Conservation Need

"If you have a backyard, this book is for you."

—Richard Louv, author of *Last Child in the Woods*

Bringing Nature Home



UPDATED AND EXPANDED

**How You Can
Sustain Wildlife
with Native Plants**

Douglas W. Tallamy

With a Foreword by Rick Darke



Hackberry





Nannyberry





Pagoda dogwood





Hazelnut





Wild plum





Redosier dogwood





Black cherry





White Pine





Red maple





White oak

Trees and shrubs for pollinators



Trees & shrubs provide an early nectar source for native bees. Planting a flowering tree is THE BEST thing you can do to support pollinators.

Trees:

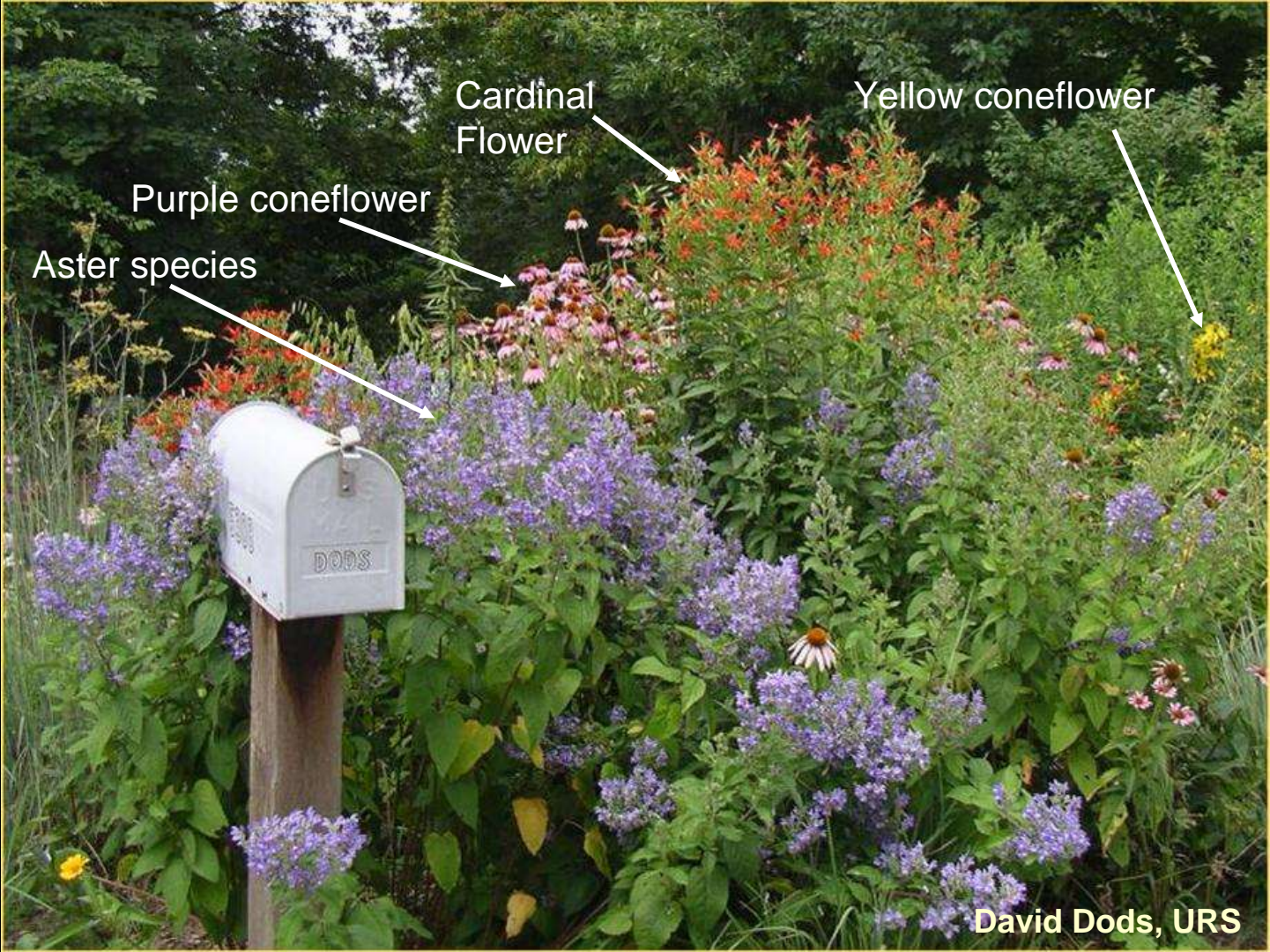
- Willows
- American Basswood
- Serviceberry-Edible
- Pagoda Dogwood
- Plum
- Cherry
- Hawthorn
- Apple

Shrubs:

- Blueberry
- Raspberry
- Dwarf Bush Honeysuckle
- Black Chokeberry
- Elderberry
- Red Twig Dogwood
- Ninebark
- Buttonbush
- Cranberry
- Spirea / Meadowsweet
- Wild Currants

2. Pocket plantings





David Dods, URS

Lawns to Legumes

Habitat Guide and planting templates

Rain Garden for Pollinators

Your pollinator planting can do double duty and improve water quality if it is also a rain garden! These plants will also work well in moist garden conditions. The selected species in this garden and bloom times make it a great butterfly garden.

Fox Sedge

Adds texture and beautiful seed heads to a rain garden. It is a tough plant that can easily handle the saturated conditions of a rain garden basin.

FS

5 plants



Bloom Time

May

Pussy Toes

These low-growing fuzzy plants slowly form carpets of foliage. In the spring their flowers rise up gracefully 6"-8" above their leaves.

PT

12 plants



Blue Eyed Grass

This bunch forming early summer bloomer. Not a true grass, its dainty sky blue flowers brighten the early summer garden, and is a great edging plant.

BE

10 plants



Hoary Vervain

Bright spikes of color to the summer garden that look great against the bright green of Fox Sedge. It is a host to Common Buckeye butterfly larva.

HV

4 plants



Swamp Milkweed

The bright flowers of Swamp Milkweed are unforgettable, and much loved by pollinators. It tends to spread, plan to divide this plant when it outgrows your garden space.

SM

4 plants



Pratle Onion

Lavender colored starry blooms in mid-summer rise from bright green clump forming flat-topped foliage. Will slowly create colonies as the plants become more established.

PO

5 plants



Joe Pye Weed

Covered with mid to late summer blooms, Joe Pye is a butterfly magnet. It will spread, be prepared to divide this plant by the third year to share with a friend.

JP

2 plants



Blue Lobelia

Flowery spikes attract bees and butterflies and blooms well into the fall. Can take part shade conditions, but needs moist soil.

BL

5 plants



Flat-Topped Aster

Enjoyed by diverse pollinators as well as rabbits and deer, if you have trouble with browsing wildlife, consider substituting with Rattlesnake Master.

FT

3 plants



Bloom Time

May

June

Back

July

August

September-Oct.

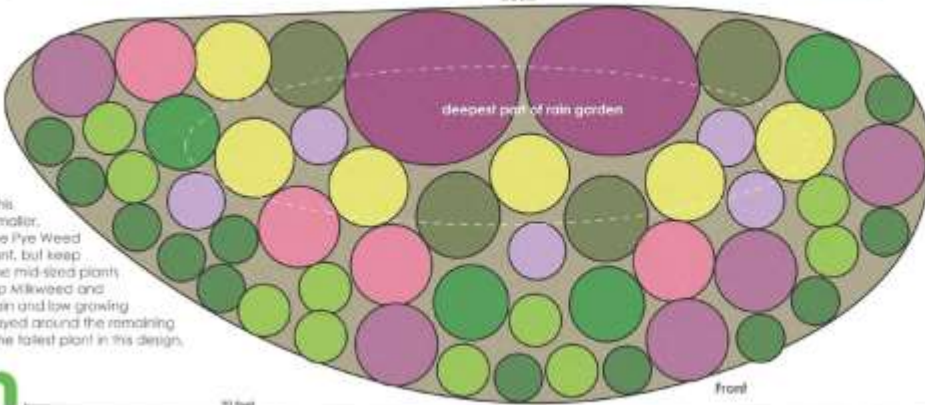
Note:

To make this planting smaller, reduce Joe Pye Weed to one plant, but keep some of the mid-sized plants like Swamp Milkweed and Blue Vervain and low growing plants arrayed around the remaining Joe Pye, the tallest plant in this design.



BWSR

bwsr.state.mn.us/creating-residential-pollinator-habitat



Featured Pollinator:
American Lady
Vanessa virginiensis

Caterpillar hosts include
Pussy Toes

Nectar plants include
Swamp Milkweed, Joe Pye Weed, Blue Lobelia, and Flat-Topped Aster

500+ species of bees live in Minnesota





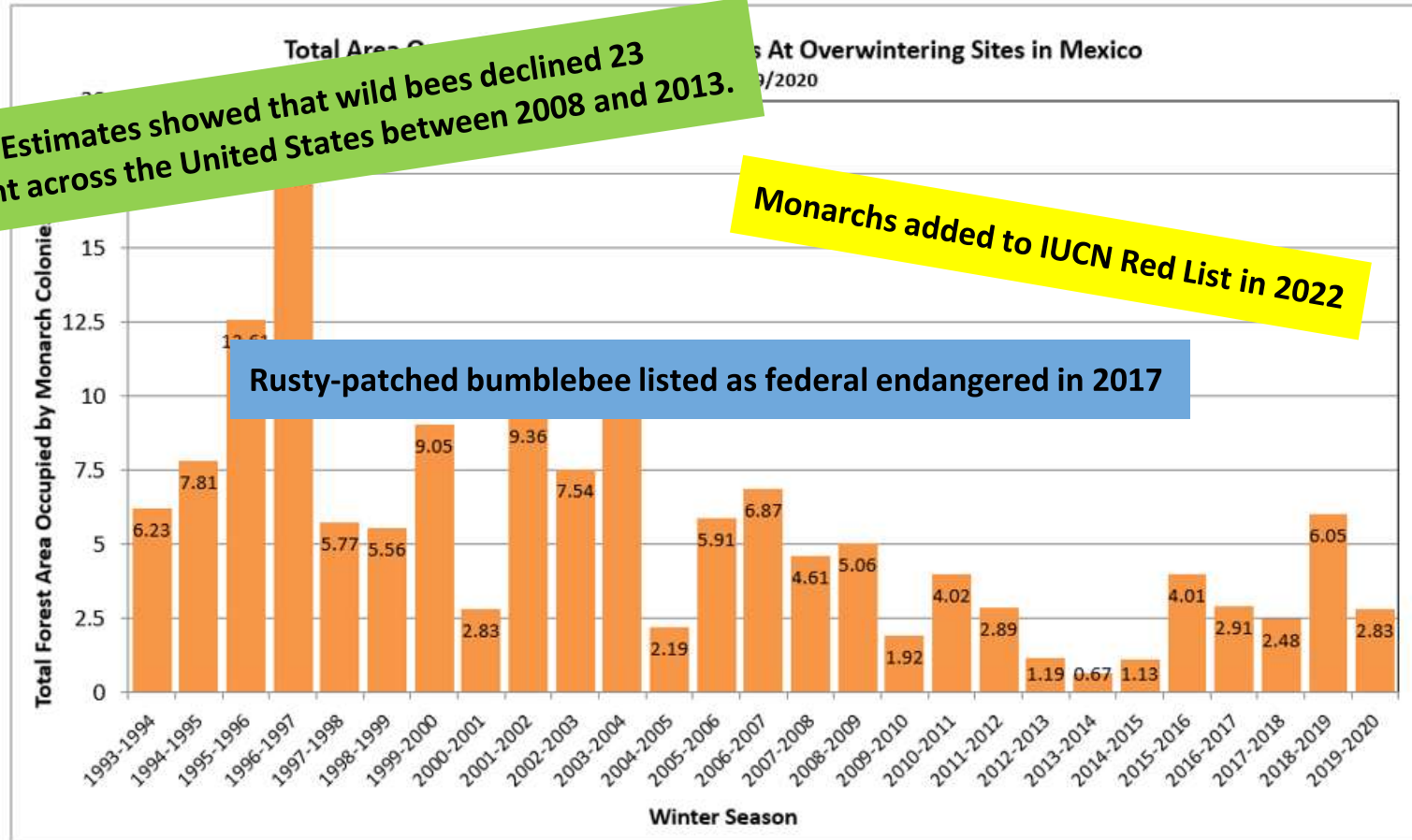
157 species of butterflies live in Minnesota

Eastern Monarch Population Numbers Decrease 53% from 2019

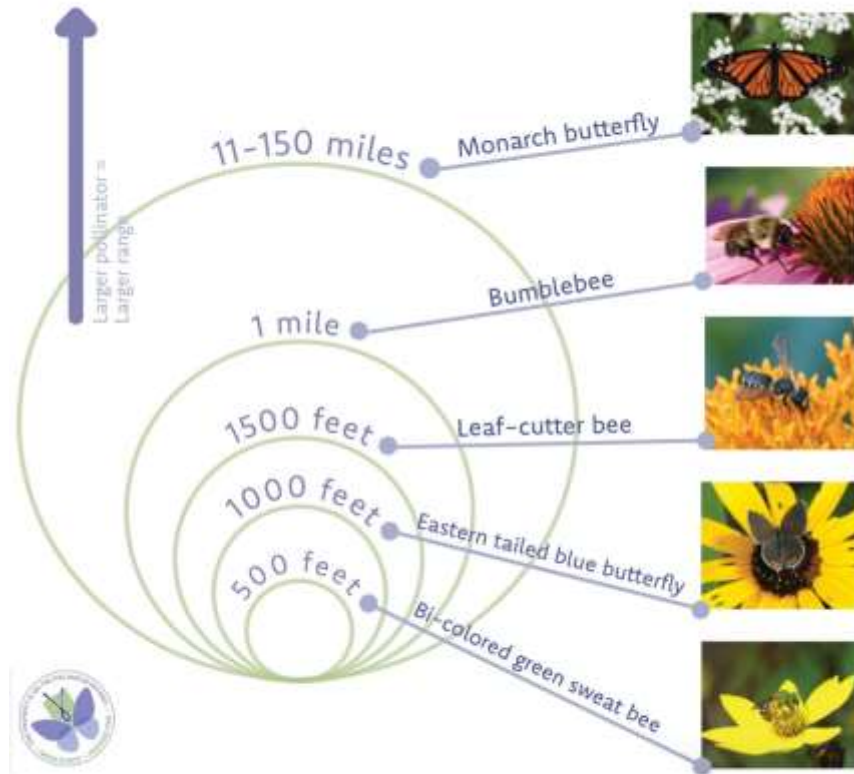
USDA: Estimates showed that wild bees declined 23 percent across the United States between 2008 and 2013.

Monarchs added to IUCN Red List in 2022

Rusty-patched bumblebee listed as federal endangered in 2017



How far can a pollinator fly to find food?



Connecting our pollinator gardens along a pathway helps bees and butterflies thrive.

Pollinator gardens for sun and shade



Shade to Partial Shade



Partial Shade to Partial Sun



Full Sun



Prairie
Dropseed



Coreopsis



Pale Purple
Coneflower



Anise Hyssop



Black-eyed
Susan



Butterfly
Milkweed

Full Sun



Prairie Blazing Star



Azure Aster



'Karl Foerster'
Feather Reed
Grass



Meadow Blazing



Side Oats



Early

3. Prairies and meadows



Pollinator Meadow | Project Example



Project Location: Stillwater

Project Size: 1 acre

Design considerations:

- Reduce regular mowing
- Steep slopes
- Transitions from dry to wet
- Create habitat and LOTS of color

Prairies



Prescribed Fire Open House

Tuesday, April 2, 4-7 p.m.

**Lake Elmo Park Reserve
Nordic Center Trailhead**

1515 Keats Ave N

No vehicle permit required

Prescribed burns help to keep grasslands and forests healthy by removing accumulated fuel, recycling nutrients, encouraging the growth of native plants, and reducing invasive species and shrubs.

AGENDA

- | | |
|-----------------|---------------------------------------|
| 4-5pm | Q & A with Experts |
| 5-5:15pm | Intro to prescribed fire |
| 5:15-6pm | Demo & live fire exercises |
| 6-7pm | Q & A with Experts |

Learn about the tools and safety protocols used to conduct prescribed fires at Washington County Parks.

There will also be info and resources for native habitat restoration on private lands.

Confirmed attendees: Washington County Parks, Dakota County Parks, City of Lake Elmo Fire Department, Washington Conservation District, Pollinator Friendly Alliance, The Prairie Enthusiasts.



4. Bee friendly lawns





Bee lawn = fine fescues + low-growing flowering plants

Find resources and how-to's at:

[bluethumb.org/turf-alternatives/pollinator-lawn](https://www.bluethumb.org/turf-alternatives/pollinator-lawn)



BEE LAWNS AND LAWN ALTERNATIVES WORKSHOPS

Tue., March 26, 6-7:30pm (online)

Thu., March 28, 6:30-7:30pm at Hardwood Creek Library

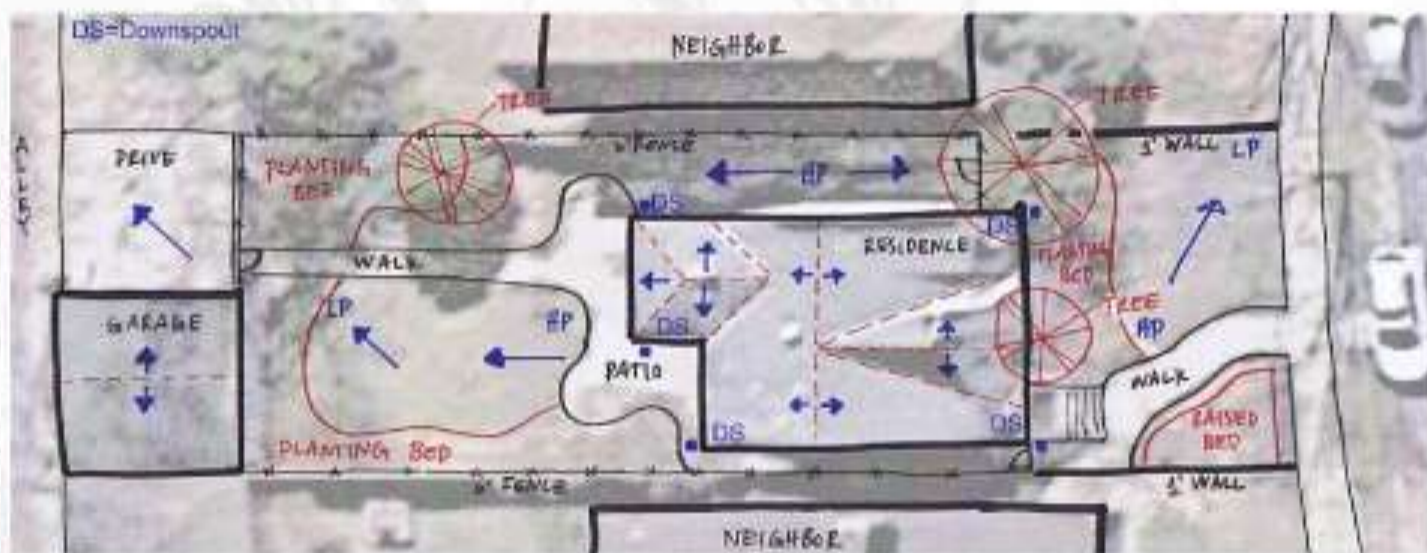
www.mnwcd.org/events



What about No Mow May?

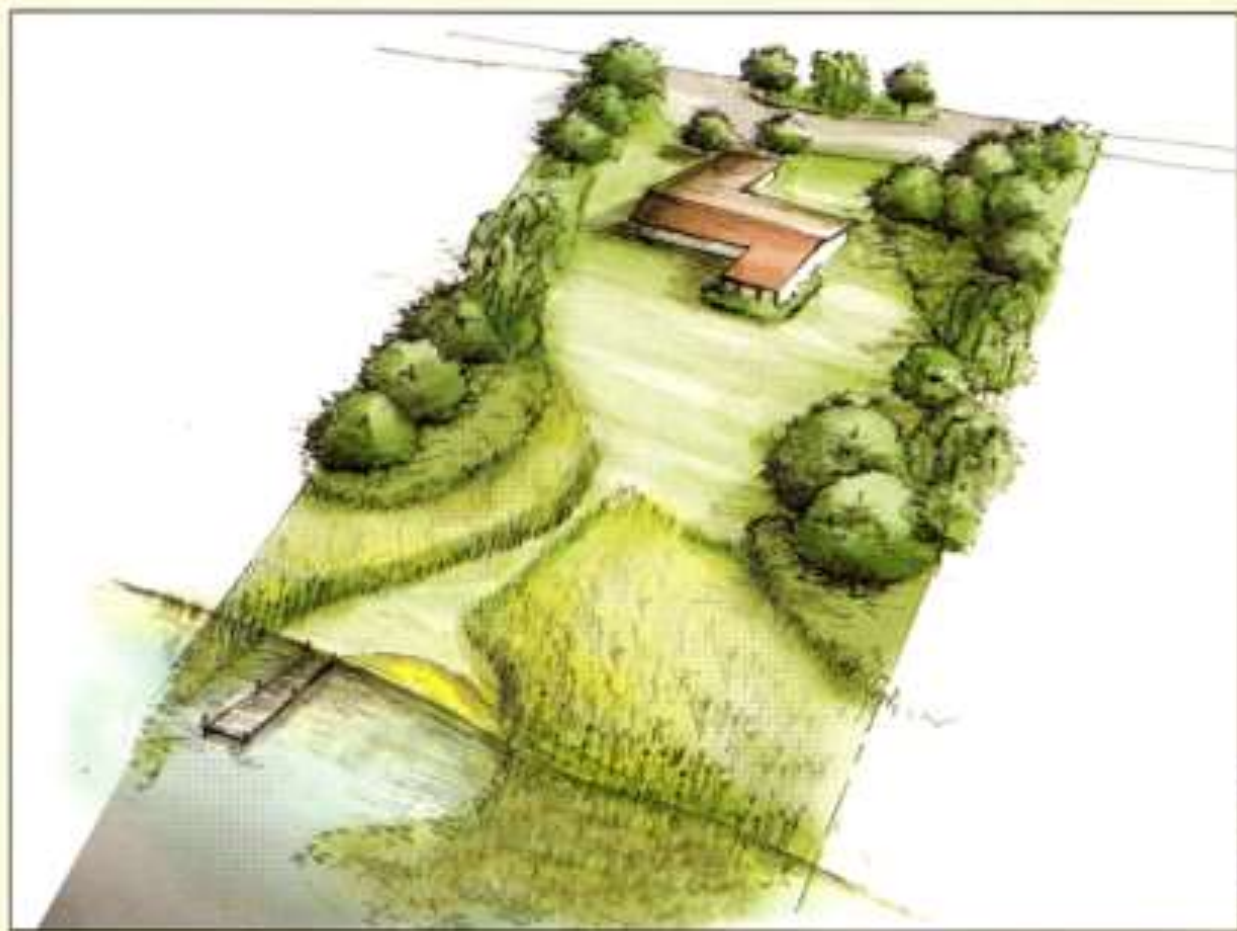


Site Assessment



What should you consider when assessing your yard?

- Function
- Existing Trees and Plants
- Drainage-where does the water go?
- Sun/Shade



Roxanna Esparza



Cues for care



Clean edges display “intent” and help keep a space from looking messy

Mowed turf edges along streets and sidewalks create edges as well



Cues for care

- Walking paths
- Edges
- Garden blended with more natural areas
- Front-loaded flowers



Cues for care

- Hard edge
- Front-loaded flowers
- Species grouped



Haider Shoreline Planting – Forest Lake



**Save some for the
birds and bees,
please!**



Wait until the
daytime temps are
consistently above
50°F to cut down
stems and rake
leaves out of garden
beds.

Resources to help you get started



- **Blue Thumb – Planting for Clean Water** – www.bluethumb.org
 - Plant selector tool; native plant suppliers and contractors; workshops and events; info on pollinator gardens, raingardens, shoreline plantings and turf alternatives
- **Washington Conservation District (Washington County, MN)**
 - Free site visits www.mnwcd.org
 - Planting for Clean Water - www.mnwcd.org/planting-for-clean-water
 - Slides and recordings from previous workshops; Print resources; Local project examples; Garden with native plants video series
 - [Blue Thumb Guide to Year Round Yard Care](#) (booklet)

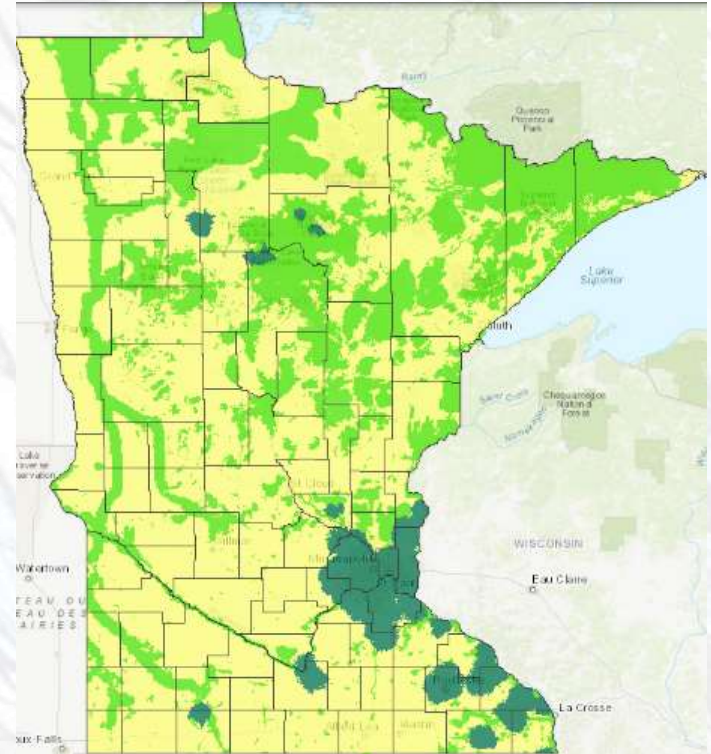
Resources to help you get started



- **Anoka SWCD**
www.anokaswcd.org
- **Dakota SWCD**
<https://dakotaswcd.org>
- **Chisago SWCD**
<https://chisagoswcd.org>
- **Isanti SWCD**
<https://www.isantiswcd.org>
- **Ramsey Conservation District**
www.ramseycounty.us/residents/environment/soil-water-conservation

Lawns to Legumes

- Up to \$400 for installing pollinator habitat
 - Dark green areas are highest priority
- Currently accepting applications for fall grants
- Apply at www.bluethumb.org



MINNESOTA & WESTERN WISCONSIN NATIVE PLANT NURSERIES

SYMBOLS d: Design Services i: Installation Services m: Maintenance Services



1 Blazing Star Gardens

Phone: 507-402-8337 d, i, m
Email: blazingstargardens@gmail.com
Web: www.blazingstargardens.com

2 Boreal Natives

3943 Munger Shaw Road, Cloquet, MN 55720 d, i, m
Phone: 218-729-7001
Email: borealnatives@prairieresto.com
Web: prairieresto.com/boreal_natives.shtml

3 Sogn Valley Farm

Phone: 763-614-8853
Email: dana@sognvalleyfarm.com
Web: www.sognvalleyfarm.com
Purchase at events & St. Paul Farmers' Market

4 Ecoscapes Sustainable Landscaping

Phone: 612-965-0848 d, i, m
Email: info@ecoscapes1.com
Web: www.ecoscapes1.com

5 Glacial Ridge Growers

Phone: 320-634-0136
Email: glacialridgegrowers@aol.com
Web: www.glacialridgegrowers.com
St. Paul Farmers' Market on Saturdays

6 Shoreview Natives

1185 Shoreview Rd, Two Harbors, MN 55616 d, i
Phone: 218-341-5286
Email: shoreviewnatives@gmail.com
Web: www.shoreviewnatives.com

7 Landscape Alternatives

25316 St. Croix Trail, Shafer, MN 55074
Phone: 651-257-4460
Email: landscapalt@frontiernet.net
Web: www.landscapalternatives.com

8 MN Native Landscapes

8740 77th St NE, Otsego, MN 55362 d, i, m
Phone: 763-295-0010
Email: bre@mnlcorp.com
Web: www.mnnativelandscapes.com

9 Morning Sky Greenery

44804 East Highway 28, Morris, MN 56267
Phone: 320-795-6234
Email: info@morningskygreenery.com
Web: www.morningskygreenery.com

10 Natural Shore Technologies

1480 Cty Rd 90, Maple Plain, MN (new location) d, i, m
Phone: 612-703-7581
Email: Rob.l@naturalshore.com
Web: www.naturalshore.com

11 Naturally Wild

Phone: 612-922-9279
Email: info@naturallywildflowers.com
Web: www.naturallywildflowers.com
Purchase at website-listed events.

12 Out Back Nursery

15280 110th St S, Hastings, MN 55033 d, i, m
Phone: 651-438-2771
Email: sales@outbacknursery.com
Web: www.outbacknursery.com

13 BluPrairie Native Plant Nursery

12975 32nd St, Watertown, MN 55388
Phone: 612-720-7941
Email: jdanie@bluprairie.com
Web: www.bluprairie.com

14 Prairie Moon Nursery

32115 Prairie Lane, Winona, MN 55987
Phone: 866-417-8156
Email: info@prairiemoon.com
Web: www.prairiemoon.com
Purchase online

15 Prairie Restorations Inc

31646 128th St NW, Princeton, MN 55371
21120 Ozark Court North, Scandia, MN 55012
Phone: 800-837-5986 d, i, m
Email: info@prairieresto.com
Web: www.prairieresto.com

16 Native Sun Seeds and Plants

St. Croix Valley, MN
Phone: 651-318-8667
Email: nativesunseedsandplants@gmail.com
Web: www.nativesunseedsandplants.com
Purchase online or at website-listed events.

17 Shooting Star Native Seeds

20740 Cty Rd 33, Spring Grove, MN 55974
Phone: 888-983-3670
Email: info@ssns.co
Web: www.shootingstarnativeseed.com

18 Sunshine Gardens Nursery and Landscaping

1286 Shadywood Shores Dr NW d, i, m
Pine River, MN 56474
Phone: 218-947-3154
Email: sgardens@uslink.net
Web: www.sunshinegardens.tripod.com

19 Dragonfly Gardens

491 State Highway 46 Amery, WI
Phone: 715-268-7660
Email: info@dragonflygardens.net
Web: www.dragonflygardens.net

20 Lupine Gardens

880 155th St, Amery, WI 54001 d, i
Phone: 715-222-6669
Email: lupinegardens@yahoo.com
Web: www.lupinegardens.com

21 Kinnikinnic Natives

235 State Road 65, River Falls, WI 54022
Phone: 715-425-7605 or 715-222-6910
Email: whuhnke@dishup.us
Web: www.kinninatives.com

22 Leaning Pine Natives

3130 S Camp Amnicon Rd, South Range, WI
Phone: 715-398-5453
Email: phlina@gmail.com
Call for appointment.

Have Hope!

- It is easy to feel overwhelmed by environmental problems. Where do we begin?
- Start small. Even small interventions can make a big difference when everyone works together.
- Know that you're not alone. Look around!





Thank you!